

PROPOSED UNIT DEVELOPMENT

CONCEPT DESIGN SKETCH

FOR

MGP PROPERTY DEVELOPMENT

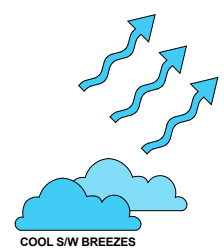
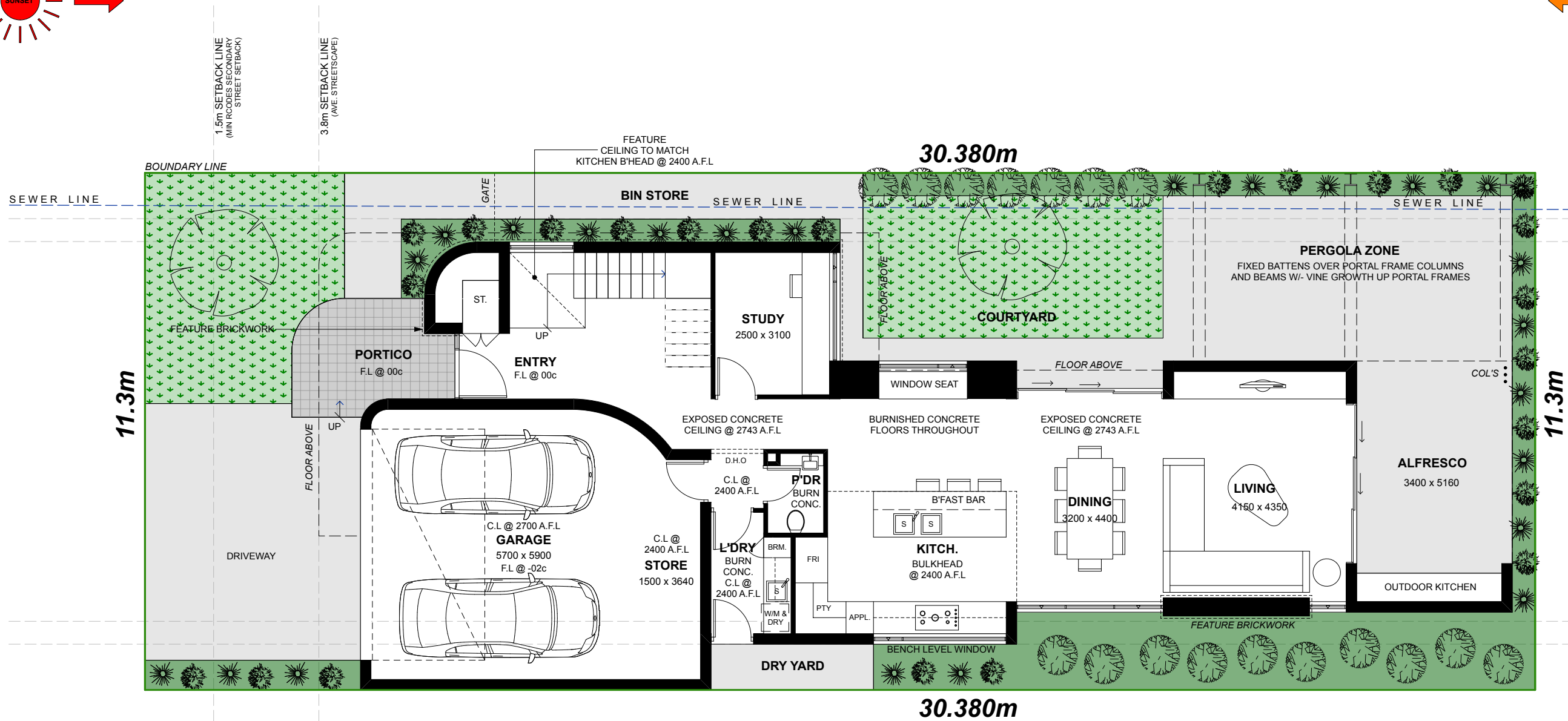
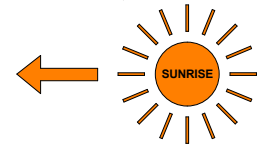
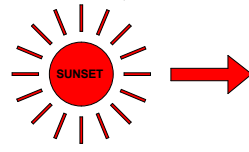
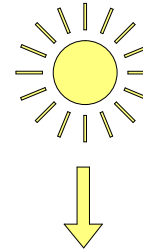
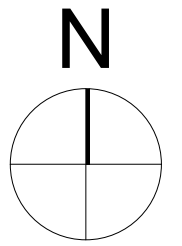
AT

UNIT D LOT 1059 (#44) BLINCO STREET, FREMANTLE

MGP PROPERTY DEVELOPMENT
UNIT D LOT 1059 (#44) BLINCO STREET, FREMANTLE

REV.	DESCRIPTION	DATE
SK-02	FINAL CONCEPT DESIGN SKETCH DRAWINGS	13/02/18
SK-03	AMENDMENTS TO FINAL CONCEPT DESIGN SKETCH DRAWINGS	07/08/18

REV:	SK-03	JOB NO.: 152-18
DRAWN:	JD	DRAWING NO.:
SCALE @ A3:	AS SHOWN	A00 OF A03

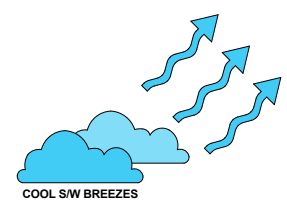
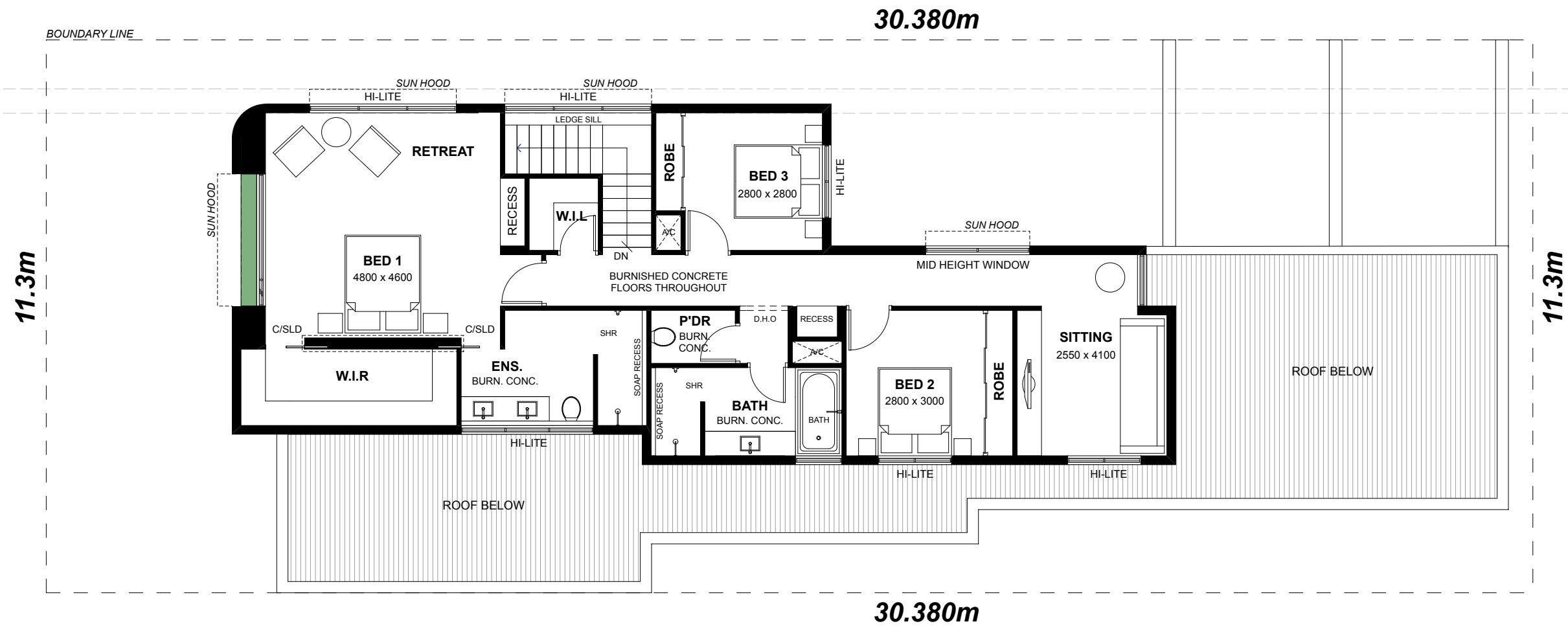
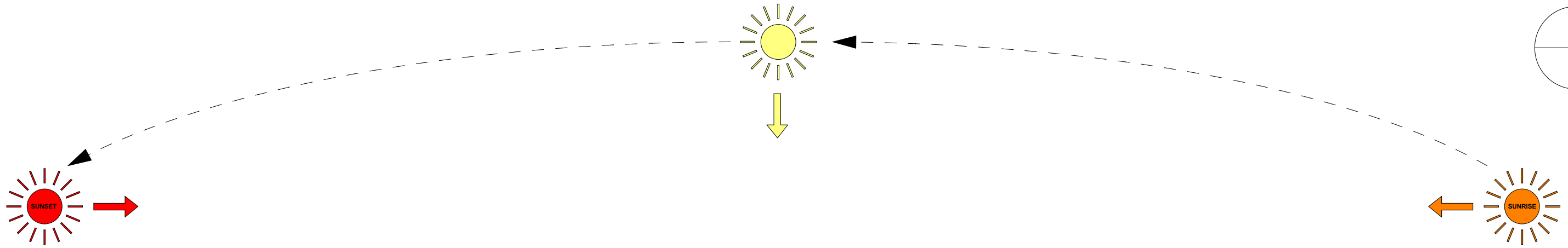
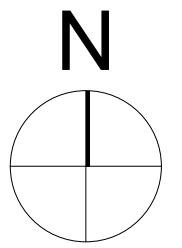


LOT D UNIT TYPE - GROUND FLOOR PLAN
Scale 1:100

LOT D UNIT TYPE - BUILDING AREAS	
GROUND FLOOR AREAS	
ALFRESCO	18.17
GARAGE & STORE	46.97
GROUND LIVING	109.58
TOTAL GROUND FLOOR AREAS	174.72 m2
UPPER FLOOR AREAS	
FIRST LIVING	114.29
TOTAL UPPER FLOOR AREAS	114.29 m2
TOTAL LIVING AREAS	223.87 m2
TOTAL BUILDING AREAS	289.01 m2

REV.	DESCRIPTION	DATE
SK-02	FINAL CONCEPT DESIGN SKETCH DRAWINGS	13/02/18
SK-03	AMENDMENTS TO FINAL CONCEPT DESIGN SKETCH DRAWINGS	07/08/18

REV:	SK-03	JOB NO.:	152-18
DRAWN:	JD	DRAWING NO.:	
SCALE @ A3:	AS SHOWN	A01 OF A03	

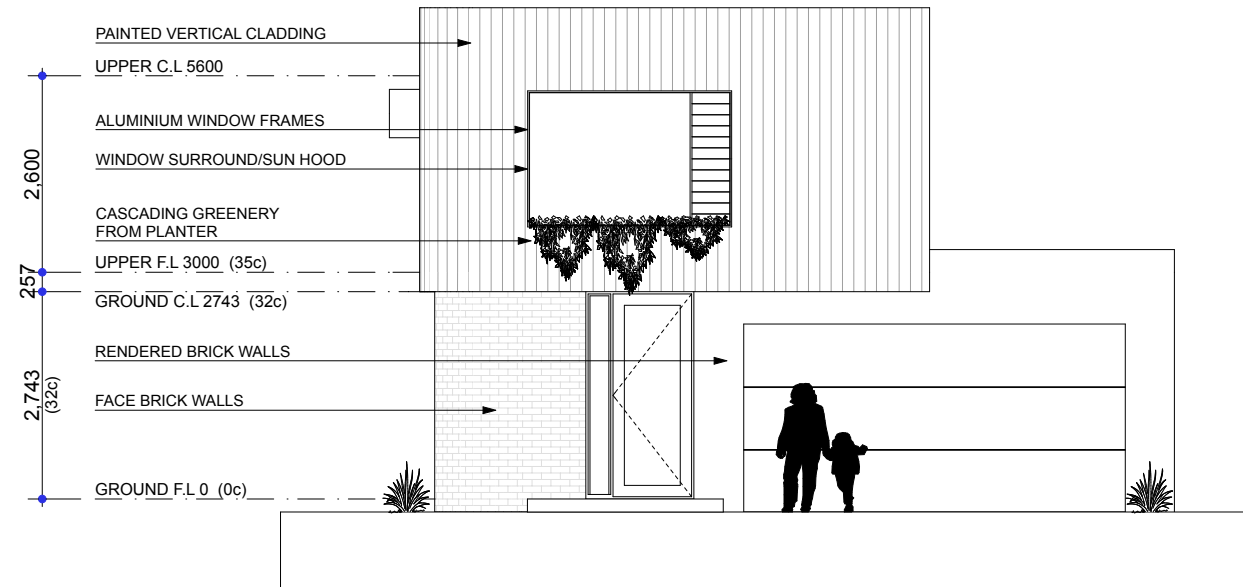


LOT D UNIT TYPE - UPPER FLOOR PLAN
Scale 1:100

LOT D UNIT TYPE - BUILDING AREAS	
GROUND FLOOR AREAS	
ALFRESCO	18.17
GARAGE & STORE	46.97
GROUND LIVING	109.58
TOTAL GROUND FLOOR AREAS	174.72 m2
UPPER FLOOR AREAS	
FIRST LIVING	114.29
TOTAL UPPER FLOOR AREAS	114.29 m2
TOTAL LIVING AREAS	223.87 m2
TOTAL BUILDING AREAS	289.01 m2

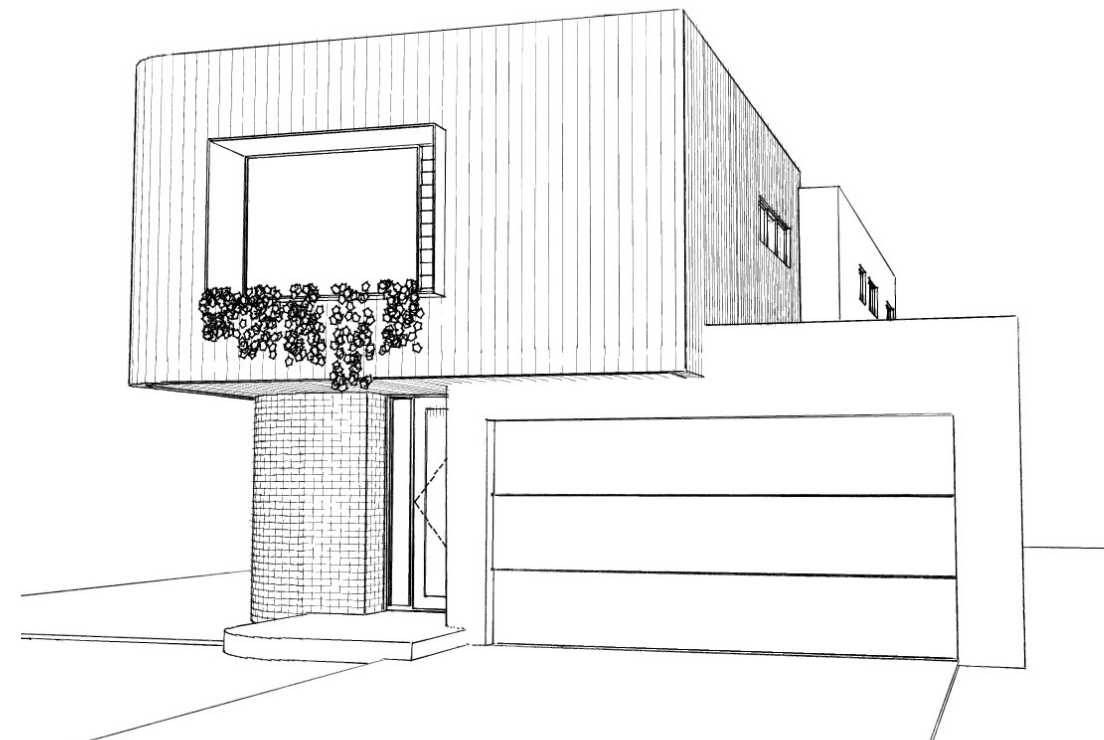
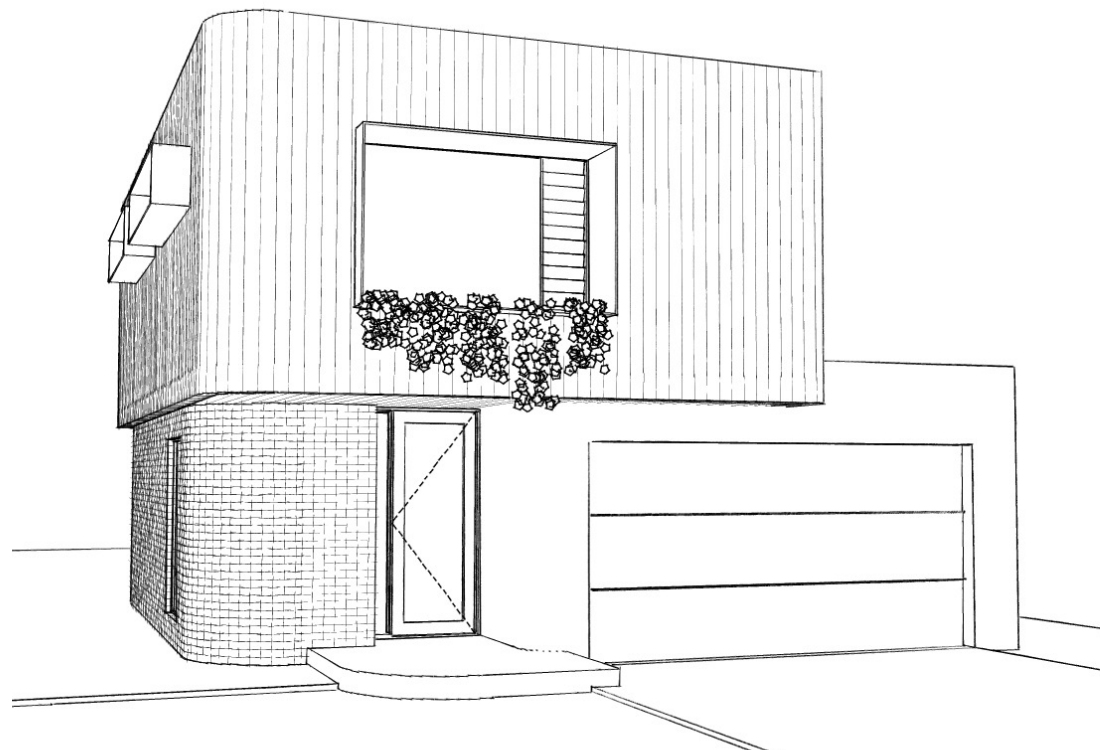
REV.	DESCRIPTION	DATE
SK-02	FINAL CONCEPT DESIGN SKETCH DRAWINGS	13/02/18
SK-03	AMENDMENTS TO FINAL CONCEPT DESIGN SKETCH DRAWINGS	07/08/18

REV:	SK-03	JOB NO.:	152-18
DRAWN:	JD	DRAWING NO.:	
SCALE @ A3:	AS SHOWN	A02 OF A03	



LOT D UNIT TYPE - FRONT ELEVATION

Scale 1:100



REV.	DESCRIPTION	DATE
SK-02	FINAL CONCEPT DESIGN SKETCH DRAWINGS	13/02/18
SK-03	AMENDMENTS TO FINAL CONCEPT DESIGN SKETCH DRAWINGS	07/08/18

REV:	SK-03	JOB NO.:	152-18
DRAWN:	JD	DRAWING NO.:	
SCALE @ A3:	AS SHOWN		A03 OF A03